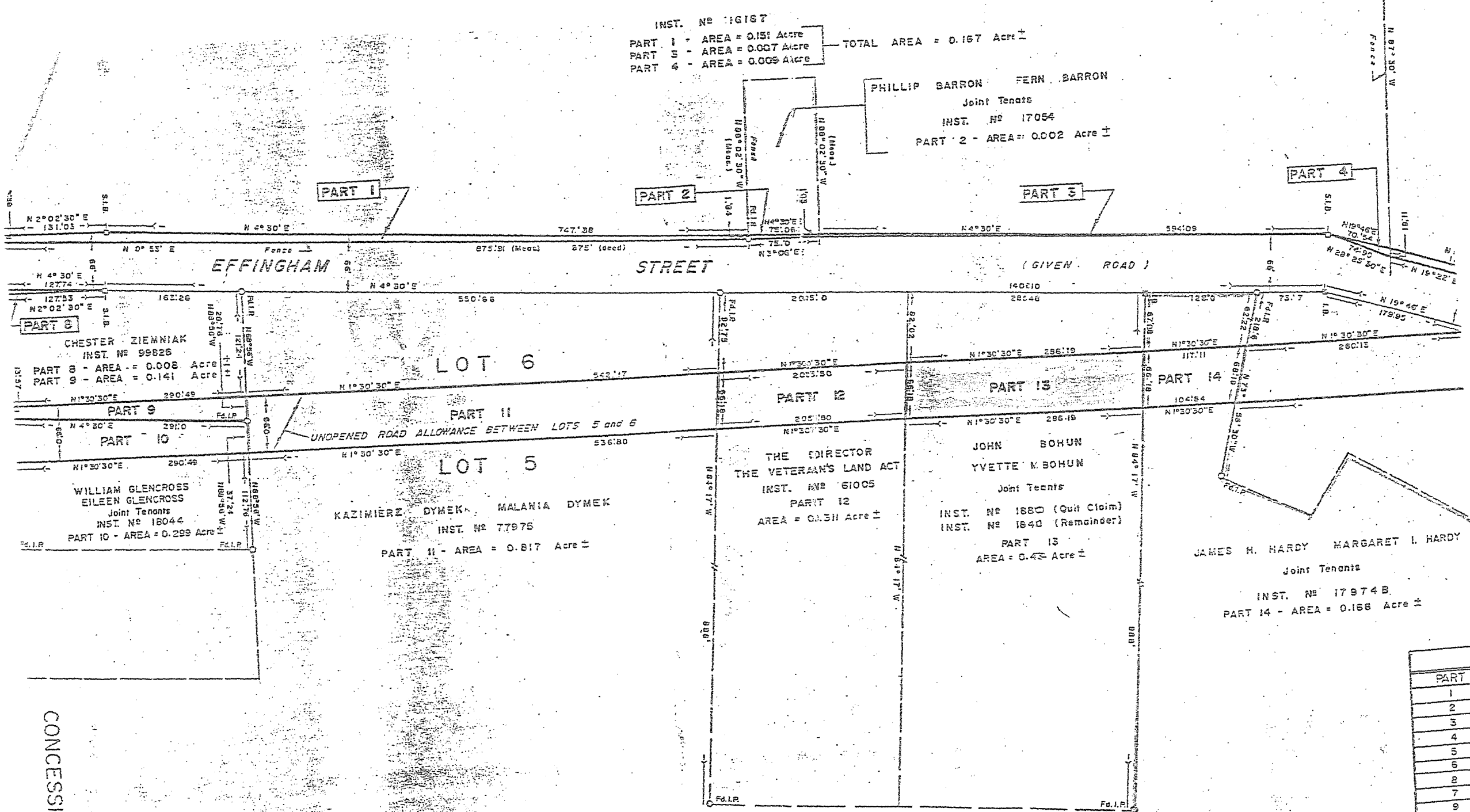


SCHEDULE "A"
TO BY-LAW #2584 (2004)

ALL AND SINGULAR that certain parcel or tract of land and premises, situate, lying and being in the Town of Pelham, in the Regional Municipality of Niagara and being composed of that part of the road allowance between Lots 5 & 6, Concession 9 and designated as Part 14, Plan RD-18.

INST. NO 16167
 PART 1 - AREA = 0.151 Acre
 PART 3 - AREA = 0.007 Acre
 PART 4 - AREA = 0.009 Acre
 TOTAL AREA = 0.167 Acre ±

PHILLIP BARRON FERN BARRON
 Joint Tenants
 INST. NO 17054
 PART 2 - AREA = 0.002 Acre ±



CONCESSION 9

RD-18

PART
1
2
3
4
5
6
7
8
9
10
11
12
13
14