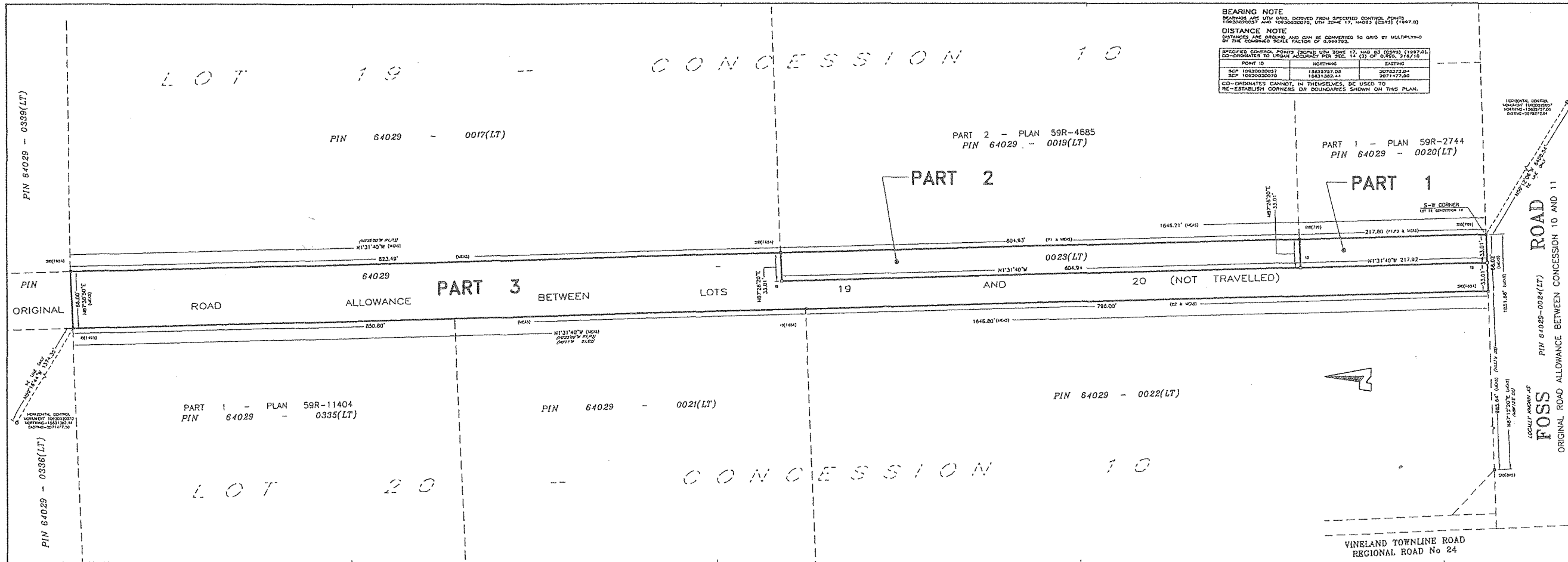


SCHEDULE "A"
TO
BY-LAW #3378 (2013)

ALL AND SINGULAR that certain parcel or tract of land and premises, situate, lying and being in the Town of Pelham, in the Regional Municipality of Niagara and being composed of that part of the road allowance between Lots 19 and 20, Concession 10, Foss Road, more particularly described as Part 3 on Reference Plan 59R-14777.



PLAN 59R-14777

RECEIVED AND DEPOSITED

DATE 13 NOVEMBER 2012

DATE Nov. 15, 2012

R. Long
REGISTRAR FOR THE LAND TITLES
DIVISION OF NIAGARA SOUTH(3)

SCHEDULE

PART LOT CONCESSION PIN

1 PART OF THE ROAD CONCESSION 10 64029-0023(LT)

2 ALLOWANCE BETWEEN LOTS 19 AND 20

3

PARTS 1, 2 & 3: PART OF PIN 64029-0023(LT)

PLAN OF SURVEY OF
PART OF THE ROAD ALLOWANCE
BETWEEN LOTS 19 AND 20
CONCESSION 10
GEOGRAPHIC TOWNSHIP OF PELHAM
IN THE
TOWN OF PELHAM
REGIONAL MUNICIPALITY OF NIAGARA
SCALE 1" = 50'

DONALD G. CHAMBERS - ONTARIO LAND SURVEYOR

LEGEND

--- DENOTES SURVEY MONUMENT FOUND

--- SURVEY MONUMENT SET

SUB STANDARD IRON BAR

SSB SHORT STANDARD IRON BAR

IB IRON BAR

MEAS MEASURED

WIT WITNESS

N/S/E/W NORTH/SOUTH/EAST/WEST

PN PROPERTY IDENTIFICATION NUMBER

P1 DEPOSITED PLAN 59R-4685

P2 DEPOSITED PLAN 59R-11404

P3 DEPOSITED PLAN 59R-2144

Q1 INSTRUMENT No. R0706573 - PIN 64029-0021(LT)

Q2 INSTRUMENT No. R0106520 - PIN 64029-0022(LT)

Q3 R. H. FLEMING, O.L.S.

Q4 D. A. LAKE, O.L.S.

Q5 P. D. REITSMA, O.L.S.

Q6 D. G. CHAMBERS, O.L.S.

IMPERIAL NOTE
DISTANCES SHOWN ON THIS PLAN ARE IN FEET AND CAN BE CONVERTED TO METRES BY MULTIPLYING BY 0.3048.

SURVEYOR'S CERTIFICATE
I CERTIFY THAT:
1) THIS SURVEY AND PLAN ARE CORRECT AND IN ACCORDANCE WITH THE SURVEY ACT, THE SURVEYORS ACT AND THE LAND TITLES ACT AND THE REGULATIONS MADE UNDER THEM;
2) THE SURVEY WAS COMPLETED ON THE 22nd DAY OF AUGUST, 2012.

20 SEPTEMBER 2012

DATE

DONALD G. CHAMBERS, B. Sc., O.L.S.

CHAMBERS AND ASSOCIATES
SURVEYING LTD
17 THOROLD ROAD EAST
WILLOW GROVE
L2C 3T2

(905) 733-7841 / 733-7844
FAX (905) 733-7333
www.chambersandassociates.com

DRAWN BY O. H. T. MEAS 90339-9 DWG 90339-9_RP FILE NO 90-339-9