

THE CORPORATION OF THE
T O W N O F P E L H A M
BY-LAW #779 (1982)

Being a by-law to amend By-law #279 (1974),
as amended.

WHEREAS the Council of the Corporation of the Town of Pelham deems it necessary in the public interest to pass a by-law to regulate the use of land and the erection or use of buildings or structures within the municipality except for such purposes as may be set out in the by-law and for regulating in certain respects buildings or structures to be erected within the municipality;

AND WHEREAS pursuant to the provisions of Section 39 of The Planning Act, R.S.O. 1980, as amended, by-laws may be passed by Councils of municipalities for prohibiting or regulating the use of land and the erection of buildings or structures within the municipality for or except for such purposes as may be set out in the by-law, and for regulating in certain respects buildings or structures to be erected within the municipality;

NOW THEREFORE THE COUNCIL OF THE CORPORATION OF THE TOWN OF PELHAM ENACTS AS FOLLOWS:

- (1) THAT the lands designated on the sketch attached hereto and designated Schedule "A" to this by-law be rezoned from Industrial Deferred "M4" Zone to Commercial Industrial "CM" Zone.
- (2) THAT Schedule "B" to By-law #279 (1974), as amended, is hereby amended by changing the zone designation of the lands designated on Schedule "A" to this by-law from Industrial Deferred "M4" Zone to Commercial Industrial "CM" Zone.
- (3) THAT as a condition of the passing of this by-law the owner be required to enter into a site plan agreement with the Town of Pelham.
- (4) THAT this by-law shall come into force and take effect on the day of its passing, subject to the approval of the Ontario Municipal Board.

READ A FIRST TIME BY COUNCIL
THIS 19th. DAY OF APRIL,
1982 A.D.

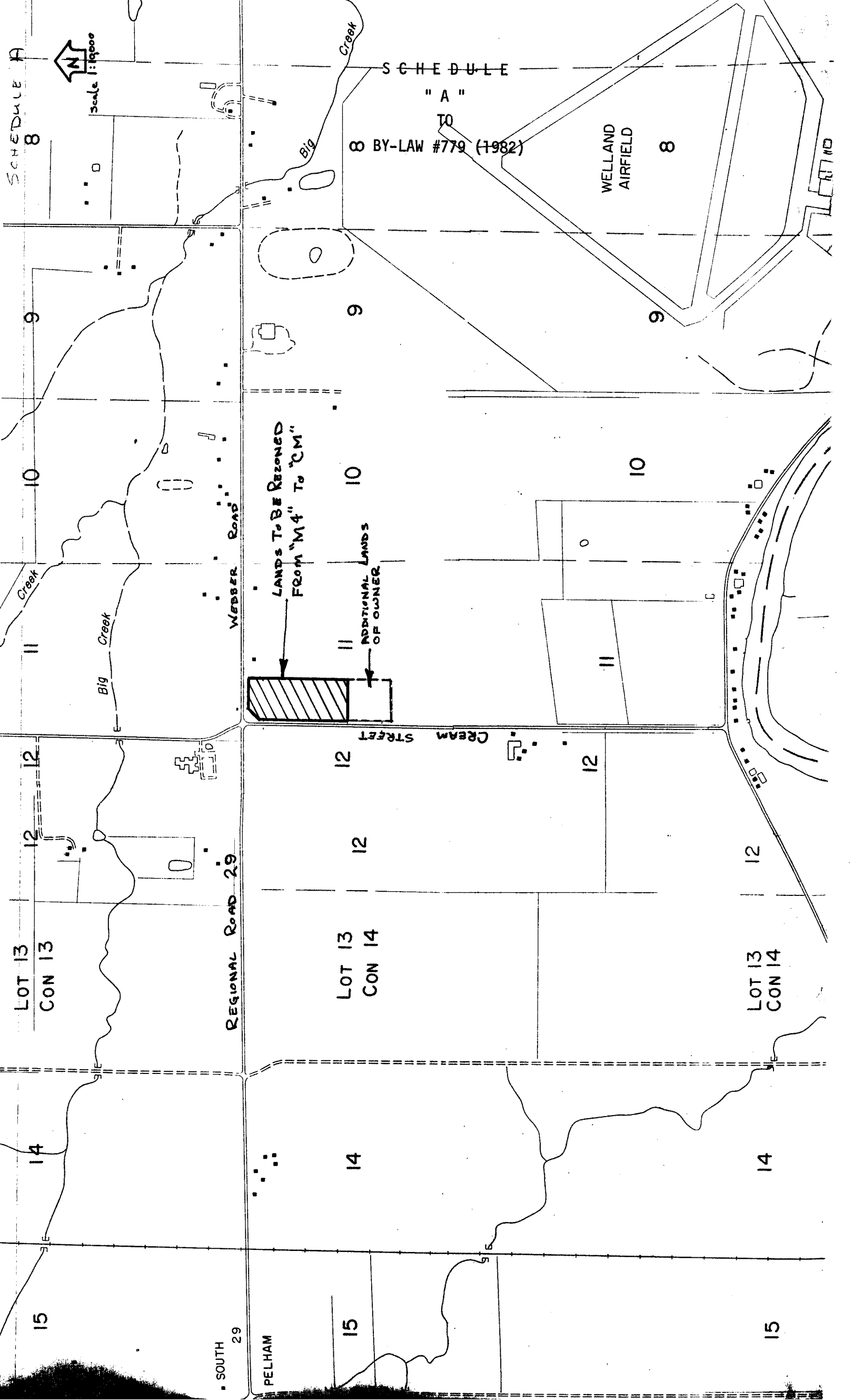
MAYOR

CLERK

READ A SECOND AND THIRD TIME AND
FINALLY PASSED BY COUNCIL THIS
19th. DAY OF APRIL, 1982 A.D.

MAYOR

CLERK



SCHEDULE A
8
Scale 1:10,000
N

SCHEDULE
"A"
TO
BY-LAW #779 (1982)

WELLAND
AIRFIELD
8

LANDS TO BE REZONED
FROM "M4" TO "CM"
ADDITIONAL LANDS
OF OWNER

LOT 13
CON 13

REGIONAL ROAD 29

LOT 13
CON 14

LOT 13
CON 14

SOUTH
29

PELHAM